



## Special points of interest:

Legislative priorities	p. 3
Beckye's View	p. 4
Around the System	p.5
Sandy's Corner	p. 6
Calendar	p.8

Nov-Dec, 2010

## State Statistics Workshop a Success

On Tuesday, December 7, Peter Haxton from the State Library came to SEKLS to offer help to libraries on accurately filing the annual state statistics form. The workshops, held at Burlington Branch, Coffey County Library and W. A. Rankin Memorial Library, Neodesha, were attended by a total of 24 participants. Peter gave an explanation on the context of the statistics: they are sent to the U.S. Census Bureau and compiled with the library statistics for all fifty states. The results are published and available to everyone from the federal government to regional systems to local boards and directors for making comparisons between libraries. They can be used to compare libraries on numbers of programs, budgets, salaries, staffing and everything that is asked on the survey. For that reason, it is important that everyone who files the statistics understand the questions in the same way and does their best to make their responses accurate. For example, be sure to use the brown button at the top of the survey to make your last year's numbers show. This will help you to know if the number you are giving this year is very different from last year's number. If the number varies by more than 3%, you will be asked to explain



the difference in an edit check. The edit checks are just a statistical tool used by the Census Bureau to help catch math errors. For example, if you add or drop a zero by accident, your answer will change your statistics greatly. Also, the "save" button at the top of the page means your work will be saved to the point you are now, so you can exit the survey and come back later. On the other hand, if you click on the "next" button it means the entire page will be saved and you will move to the next page. These things were news to me, and I hope they helped some of the others who attended.

For those who couldn't make the Dec. 7 workshop, Peter plans to produce a webinar on Elluminate during January. You can watch for that and participate via computer, and the webinar will be archived for future use or review by anyone who needs it.

Finally, Peter told us that the 2010 survey is open now and you can access it at: <http://collect.btol.com>. Your userid and password are the same as in previous years. Call Kim Rutter for yours if you've misplaced it. You can go ahead and start filling in the data that you already know, but please do not hit the final "submit" button until after the end of 2010.

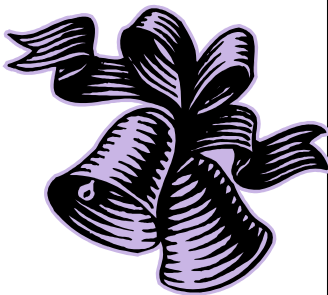
# Director's Corner

by Roger Carswell



While the Legislature doesn't begin session until January, NOW is the time for advocating for libraries with your legislators. The most effective advocacy always takes place back home. Some of you will be hosting your legislators in events coordinated by SEKLS, but whether your library is holding such an event or not, everyone needs to be involved. Here are some tips

- ⇒ You should recognize your legislators by face and name, and vice versa. If you are not already acquainted with him/her, make a point to introduce yourself. Be sure they know you are from the library.
- ⇒ Invite legislators to read to a storytime or similar event
- ⇒ Make sure your legislator knows the library legislative priorities. If not, give them a copy of the push card (you do know just where your copies are, don't you?).
- ⇒ And be sure *you* know the legislative priorities so you can talk about them even without the push card in hand.
- ⇒ Talk about your library services. Tell how your library has impacted people's lives (remember the "Turning the Page" conference?).
- ⇒ Tell what you wish you could do but lack sufficient funding for.
- ⇒ If you've had cutbacks, tell how library users have been impacted.
- ⇒ Always thank the legislator: for reading to your group, for supporting libraries, or just simply for their time talking to you.



# Speak Up!

As the Lorax says in the book by Dr. Seuss:

"Unless someone like you cares a whole awful lot, nothing is going to get better. It's not."

#### STATEMENT OF PUBLICATION

SEKLS *STACKS OF NEWS* IS PUBLISHED SIX TIMES ANNUALLY BY THE SOUTHEAST KANSAS LIBRARY SYSTEM. 218 E. MADISON. IOLA, KS 66749. SUBMISSION OF NEWS, PRESS RELEASES OR OTHER MATERIALS FROM MEMBER LIBRARIES OR OTHER STATE OR LOCAL NON-PROFIT ORGANIZATIONS IS ENCOURAGED. WE DO NOT SELL ADVERTISING SPACE. ARTICLES MAY BE EDITED FOR LENGTH, CLARITY OR ERRORS. ANY ORIGINAL ARTICLE MAY BE REPRODUCED BY ANY NON-PROFIT ORGANIZATION USING PROPER CITATION. NOT NECESSARY, BUT APPRECIATED, IS NOTIFICATION BY EMAIL, IF USING ALL OR PART OF AN ORIGINAL ARTICLE. PLEASE EMAIL EITHER [RCARSWELL@SEKLS.ORG](mailto:RCARSWELL@SEKLS.ORG) OR [KRUTTER@SEKLS.ORG](mailto:KRUTTER@SEKLS.ORG)

## Reminder

**SEKLS** has two sets of “people counters” for libraries to borrow to count library visits for the purpose of state statistics. These are intended to be checked out for a fairly short period of time (one-two weeks, generally) to take a sample of your library’s activity through the doors during a typical period. Then you divide the number on the counter in half because the counters count both the trip into the door and the trip out, and multiply to get the number for the entire year: multiply by 52 if you sampled for one typical week, or by 26 if you sampled for two weeks.

Currently, we only have one big box to send the counters on the courier, so if the boxed set of counters is out, you will need to make arrangements to pick the counters up in Iola. If a consultant is making a visit to your library, we are happy to send the counters along with him or her.

Call Kim at (620) 228-1516 to get more information or to reserve the people counters.



## Legislative priorities of the Kansas Library Association for 2011:

### Restore state funding to local libraries

Since FY2009, state aid has been reduced to Kansas community libraries by \$638,134. The impact of these reductions is seen in everything we do in libraries, from early childhood literacy programs and job-related education and training to availability of public Internet workstations.

### Maintain Kansas Universal Service Fund Support for Kan-Ed

This is the critical funding that allows Kan-Ed to subsidize internet access in libraries. (You see the charge on your home phone bill—every Kansas household with a phone line helps support the Universal Service Fund.) Latest figures show that 64% of Kansas libraries are the only provider of free public access to computers and the Internet in their communities.



# Beckye's View

by Beckye Parker



WOW! Where did the year go?!?!?!

Another Christmas season is here and as we get busy with our holiday preparations I would like to remind everyone of what is available to check out for the holidays. We have Christmas stamps that work for making Christmas cards, tree skirts, or even cookies. What about a descriptive video of the classic "White Christmas", "Santa Clause" or even "How the Grinch Stole Christmas?" A descriptive video is designed for persons with low vision. These videos describe the visual elements of the movie. In other words, they pick up where the dialogue leaves off. We also have tapes for relaxation such as "Festival of Lights" for after all the food and the stress of the of the holiday season.

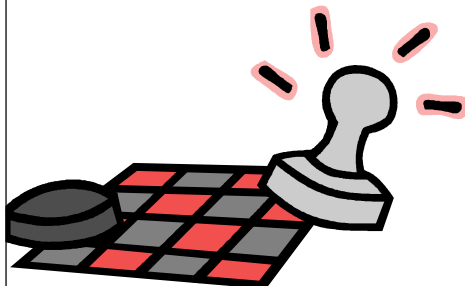
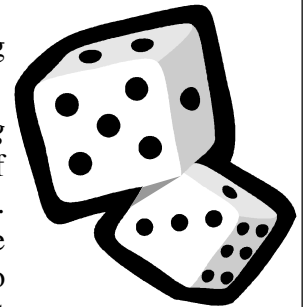
We also have lots of group and low vision games for the young and old alike.

If you are planning a large get-together, try out our *Reminiscing* or *Life Stories* games. Both games will be fun for all ages. If there is not a large crowd, try *Penny Ante* for all ages to enjoy. We also have Checkers, Chess, Dominoes, and *Uno* for both the sighted and visually impaired. We have many more items to check out to keep the kids entertained during the holidays; just give me a call.

For our seniors we have a *Bifolkal Kit* for every holiday. Our DVD and CD Binders include Christmas topics which can be checked out with the mini kit for short programs. In the *Actiphiles* we have a Christmas folder with fourteen master sheets to copy for your group. Also in the *Actiphiles* we have a New Years folder that has twelve master sheets to copy for your group.

I would like to wish everyone a Merry Christmas and a Happy New Year! If you have questions or need more information please contact Beckye at [bparker@sekl.org](mailto:bparker@sekl.org)

Or call at (620)365-5136 or (800) 279-3219.



## Did you know?

59% of adults in the United States have a library card?

Americans go to school, public and academic libraries nearly three times more often than they go to the movies?

# AROUND THE SYSTEM

- Phase 1 of the **Iola Public Library** renovation was completed in early November. Staff moved the collections back into the beautifully renovated space during a busy six days. The newly designed reading room is well-received in the community. In the next



New end panels with slat wall and more open area provide a welcome update to the Iola Public Library adult reading room.



The new magazine and coffee area.

phase the west room (formerly all staff

and SEKLS office space) will have a multipurpose room and restrooms installed on the south end.

On November 15, 2010, **Parsons Public Library** participated in “Snapshot: A Day in the Life of Kansas Libraries.” Throughout the day, patrons were asked to fill out a short survey and include their comments. In the evening, the library hosted a book discussion for adults on *Winter Wheat* by Mildred Walker. Sixteen people attended the program, which was part of the Kansas Humanities Council’s TALK series. Storytime for ages 2-6 that night coincided with Kansas Reads to Preschoolers Week, and the featured book was *Up, Down and Around* by Katherine Ayres. Thirty-two children and parents attended the event. Snapshot was sponsored by the Kansas Library Association, the Kansas Association of School Libraries, and the State Library of Kansas to demonstrate the importance of libraries to Kansas citizens.



**A Holiday Story**

After the Christmas season was over last year, one of the libraries in SEKLS received surprise visits from two separate, unrelated patrons. The patrons brought in DVDs they had received as Christmas gifts which, upon closer inspection, turned out to have the library’s ownership labels and stamps on them. The patrons asked the library staff: “Are these yours?” They were. That’s why they were labeled with the library’s name.

# Sandy's Corner

by Sandy Wilkerson



Nutrition and healthy kids was the focus of the fall workshop this year. As we go into the winter and cold I encourage you to keep your focus on healthy kids. SEKLS had 20 libraries participate in the healthy kids challenge project. It was a wonderful workshop and each library went home with many materials to add healthy choices into storytime. Nutrition foods and exercise were focused on as well as reading to kids. The system office has an oversized food pyramid with food cards for check-out to any library interested in focusing on healthy food choices. The Healthy Kids Challenge organization is sending weekly newsletters to the 20 participating libraries to encourage the continuation of the program ideas presented at the workshop in September. What ways have you changed your storytime to include healthy food choices or exercise events?

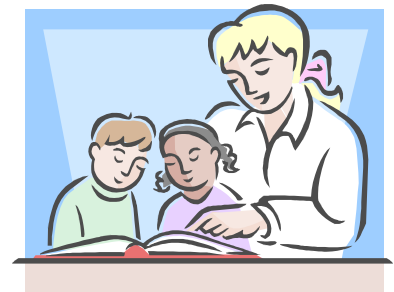
I have heard of wonderful preschool programs that happened during "Kansas Reads to Preschoolers" week. *Up, Down and Around* by Katherine Ayres was the featured book. I hope that you considered outreach programs with any local daycare providers in your community to reach all the preschoolers possible.

I am adding photos to the website of storytimes and special programs, if you have any that would like to submit, please send them to [swilkerson@sekls.org](mailto:swilkerson@sekls.org). Make sure that you have signed permission from parents or guardians if you submit photos of children.



## Storytime Sparks

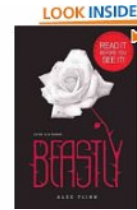
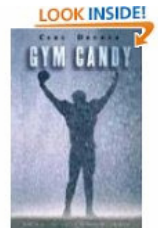
Doesn't hibernation sound like a good thing! Reserve the [Bear Snores On](#) puppet kit to share with your storytimers to talk about all the different things that animals do in the winter. Call SEKLS today to reserve!



# Top Five

It's very hard to choose just 5, but here is our  
Submitted by Kay Kelly at **West Elk High School**

1. *The Hunger Games* trilogy by Suzanne Collins
2. *The Red Pyramid* by Rick Riordan
3. *Gym Candy* by Carl Deuker (or anything else by Deuker)
4. *Beastly* by Alex Flinn
5. *Vampire Academy* series by Richelle Mead



(Also, students are always requesting books by P.C. Cast, Jodi Piccoult, Sarah Dessen, Ann Rinaldi & Jeff Kinney)

## ANNOUNCEMENTS

### Looking forward to summer:

Mark your calendars for the summer reading workshop. February 21, 2011 in Iola. Details pending and will be announced in a flyer.

### Did you find the order form?

The glossy order form was tucked inside the summer reading manual. Check the shipping deadlines and turn in your orders in a timely manner for the delivery date you desire. Remember CSLP is offering FREE SHIPPING on summer reading items ordered from this order form.

SEKLS would like to add to the **Wii game collection**. If your Young Adult group has a request for a game that is super fun to play, please send it to [swilkinson@sekls.org](mailto:swilkinson@sekls.org). We ask that they be rated T or E.



**Southeast Kansas  
Library System**

218 E. Madison  
Iola, KS 66749



Address Service Requested

NONPROFIT  
ORGANIZATION  
U.S. POSTAGE PAID  
Iola, Kansas  
PERMIT No. 13

---

## *SEKLS Calendar*

- December**
- 13, Legislative Coffee, Fredonia Public Library: 7pm**
  - 15, Legislative Coffee, Girard Public Library: 2pm**
  - 15, Legislative Coffee, Independence Public Library: 7pm**
  - 17, Legislative Coffee, Fort Scott Public Library: 7pm**
  - 25, Merry Christmas!**
- January**
- 1, Happy New Year**
  - 14, SEKnFind Users' Group, Independence: 9am**
  - 17, Martin Luther King, Jr. Day, SEKLS closed**
  - 28, Libraries celebrate 150th birthday of Kansas (official celebration date)**
  - TBA, Workshops: Disaster Preparedness and MyKLOW websites**